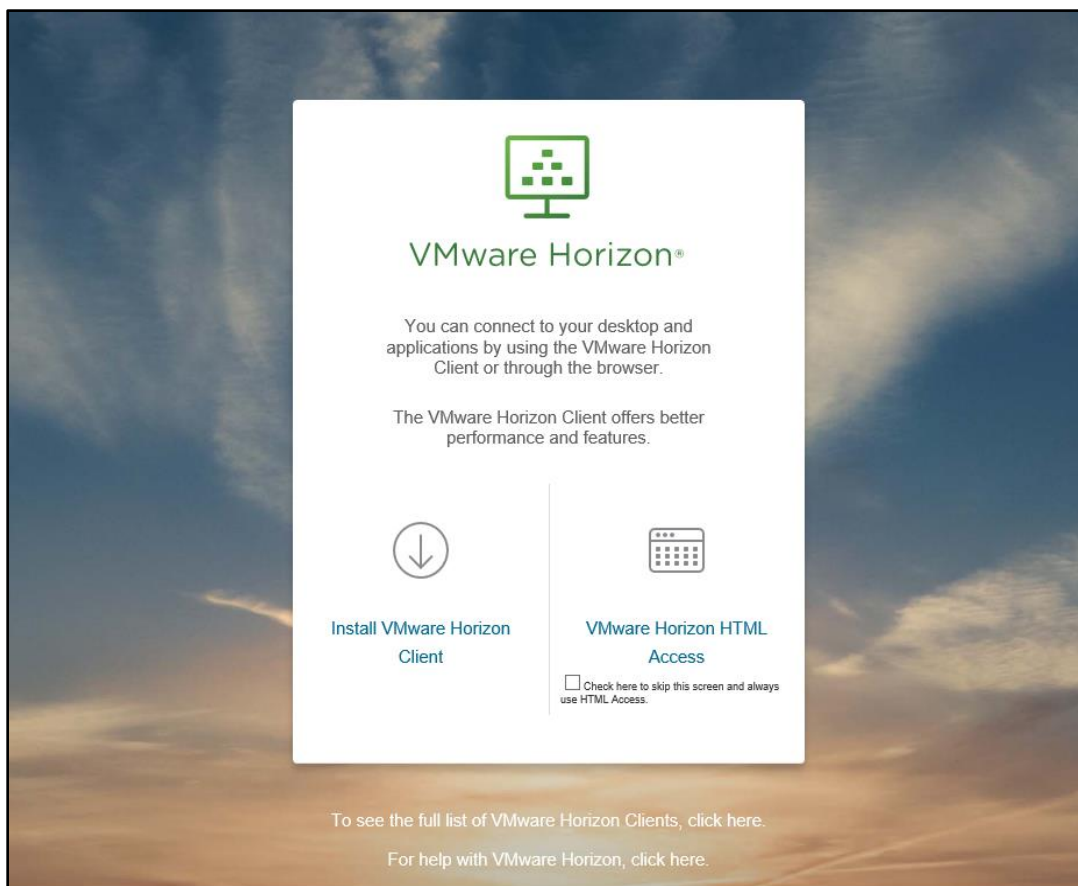


Installing and Configuring the VMWare Horizon Client on your PC or Laptop

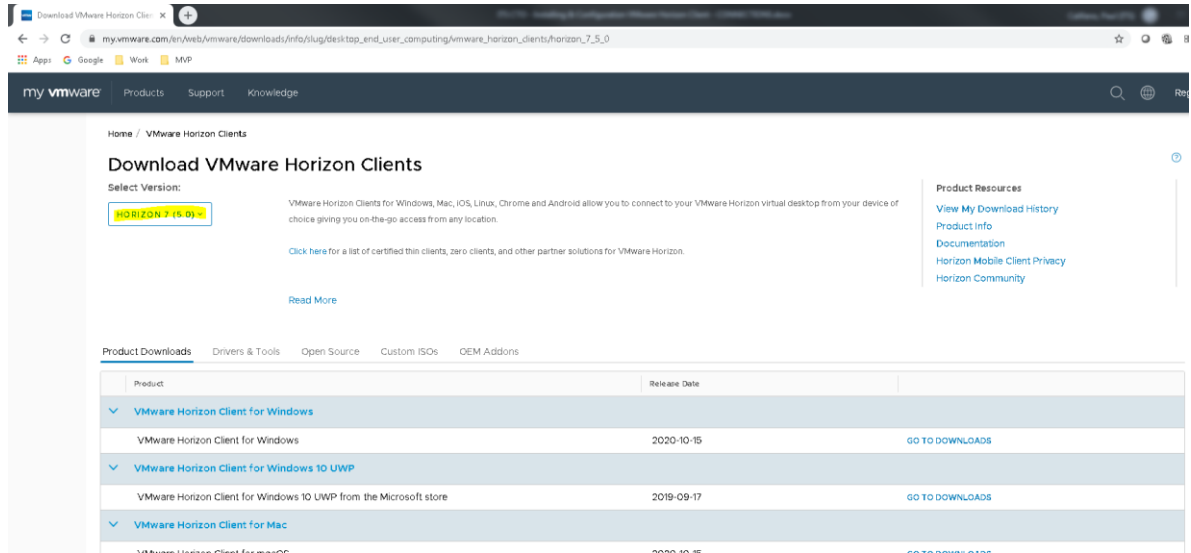
Important:

When installing the VMware Horizon Client, you must have administrative rights to your machine in order to complete the install. If the client is already installed, please proceed to Step 10 to set up the CONNECTIONS RDS Environment.

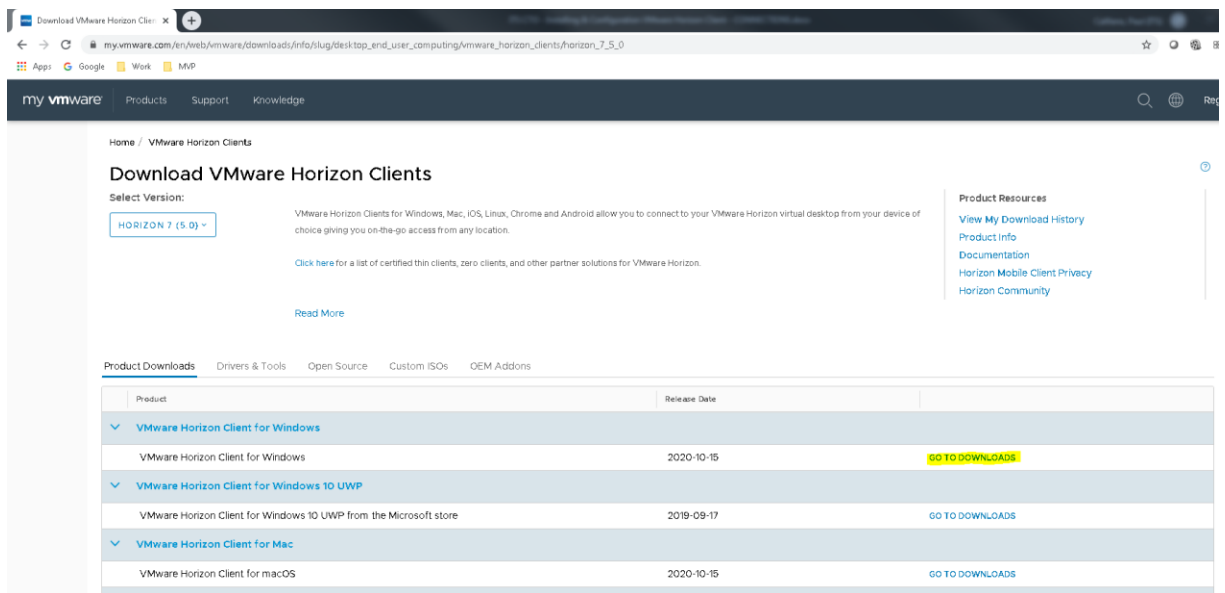
1. Go to <https://remote.ny.gov> from your Internet browser.
2. Select "Install VMware Horizon Client".



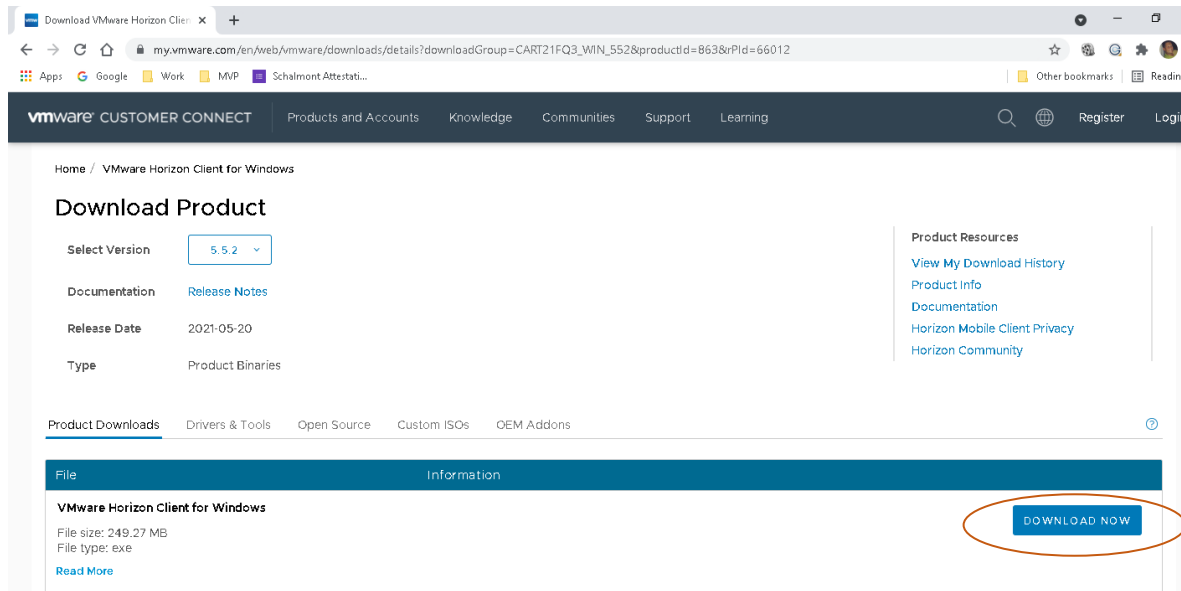
3. Select Version “Horizon 7 (5.0)” in drop-down.



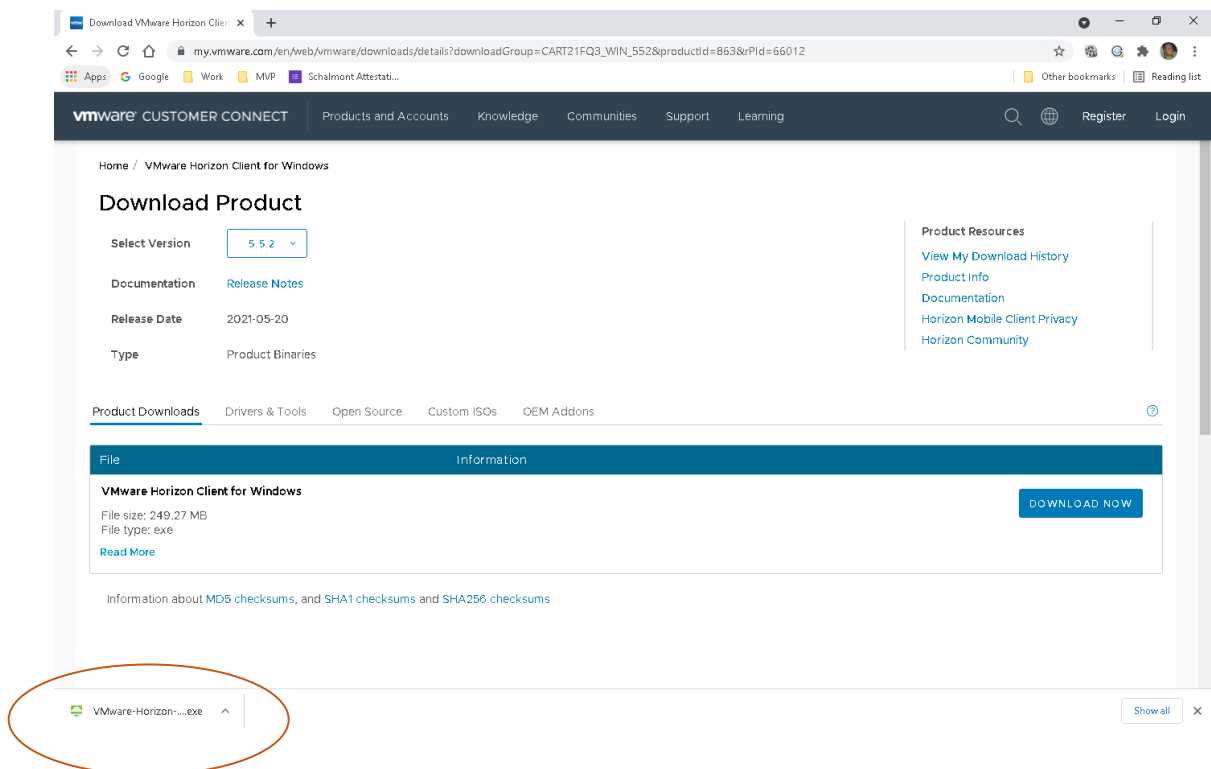
4. Select “Go to Downloads” for your Operating System.



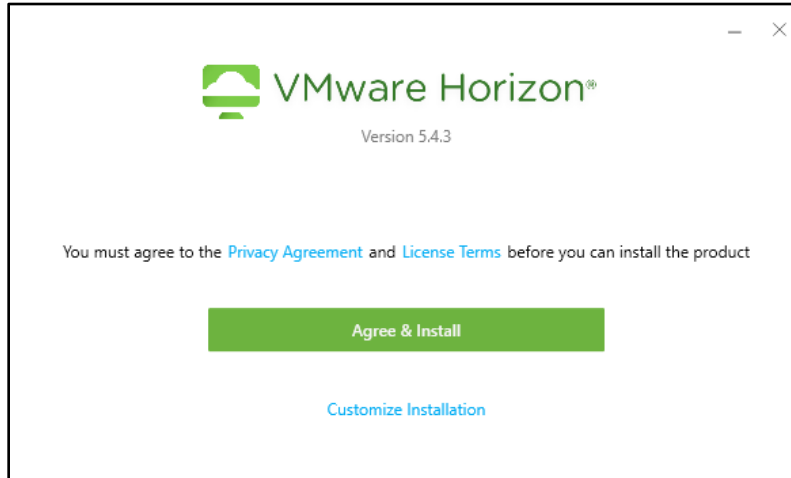
5. Select "Download Now".



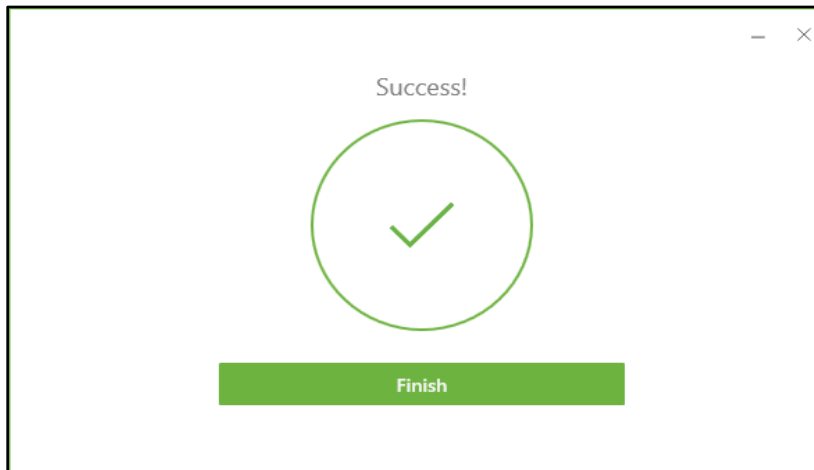
6. Select "Open" from drop down list bottom left (circled).



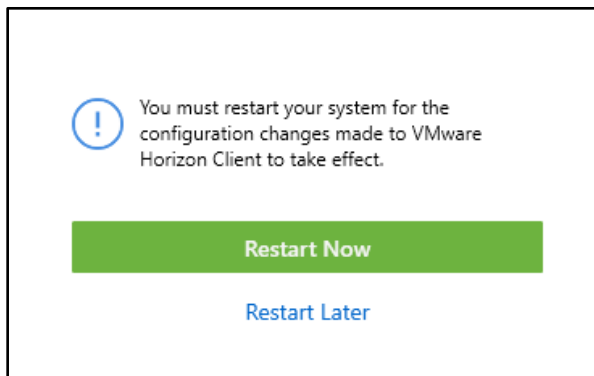
7. Select "Agree & Install".



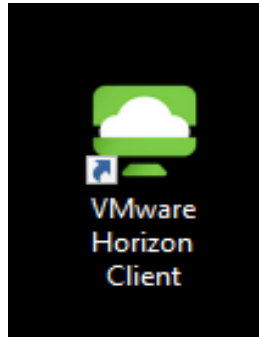
8. Select "Finish".



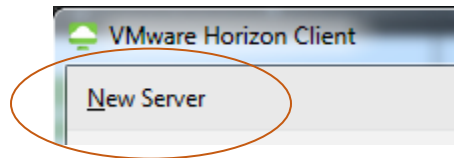
9. Select "Restart Now".



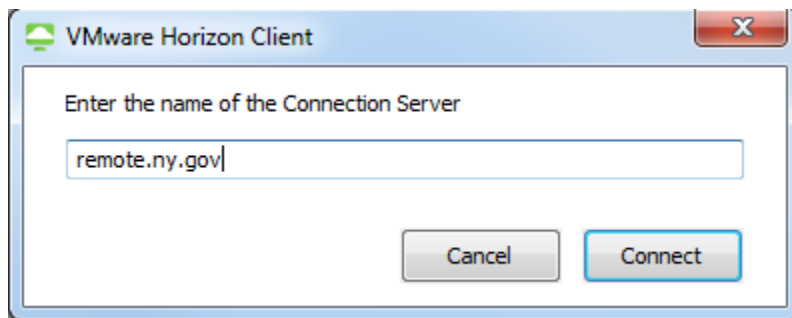
Once your system has restarted you will see the VMware Horizon Client icon on your desktop.



10. Open the client by double clicking the VMWare Horizon Client on your Desktop.
11. Click "Add Server"

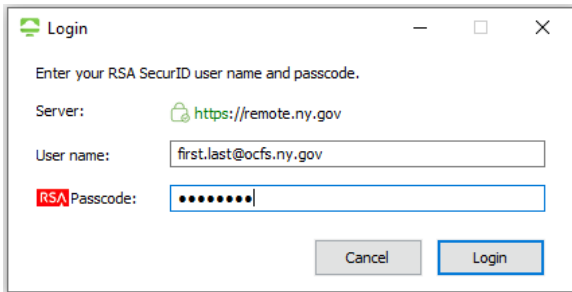


12. Enter "remote.ny.gov" as the connection server and select "Connect".

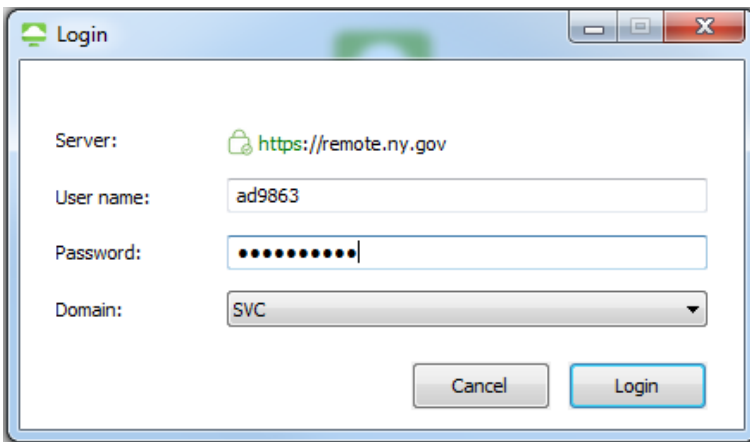


13. If you're connecting from a device that is not on the State Network, you will be prompted for an RSA passcode. If prompted, enter your email or User Principle Name (the user name you used to set up your token) and your RSA passcode. Remember, if you have a soft token, enter only the passcode generated. If you have a hard token, enter your PIN followed by the passcode generated.

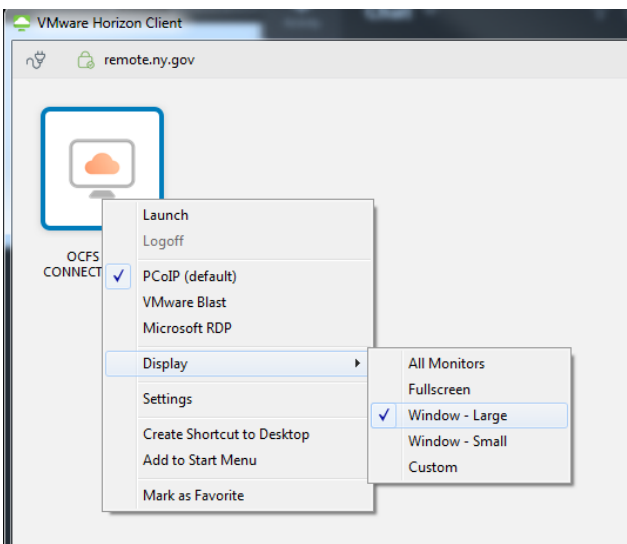
If you are not presented with the login box asking for your RSA token, skip this step, and go to the next step.



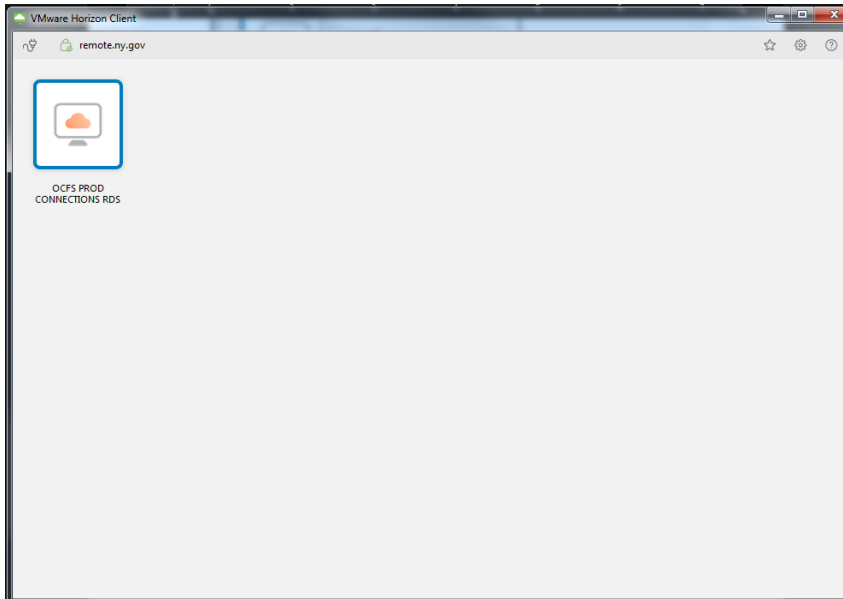
14. Enter your SVC ID as your Username and enter the password for that account. Make sure the Domain dropdown has "SVC" selected, then select "Login".



15. Right click the OCFS Prod CONNECTIONS RDS icon, go to Display, and choose Windows-Large.



16. You will be presented with the Connections desktop icon. Double click this icon to open the desktop.



17. Once your CONNECTIONS VDI Session Starts, Launch the icon called "PROD-CONNECTIONS (VApp)"

